

## AEROCASE® - MCIS1 | MCIL1 Intubation Bags

Intubation bags EMS in "Small" made of AEROTex® - DURA (Nylon) and "Large" made of AEROTex® - PLAN (Tarpaulin) for the safe holding of laryngoscope, blades, laryngeal masks, etc.

### Intubation Bag MCIS1

Space-saving, rollable intubation bag made of durable nylon material AEROTex® - DURA (Nylon).

- High quality nylon: Particularly tear-resistant fibers | Durable and long lasting
- Clearly structured interior with wide, stable fixation loops
- Spacious inner pocket that can be closed separately
- Lateral flaps protect the contents from falling out
- Length-adjustable closure strap with width adjustment via hoop and loop fastener

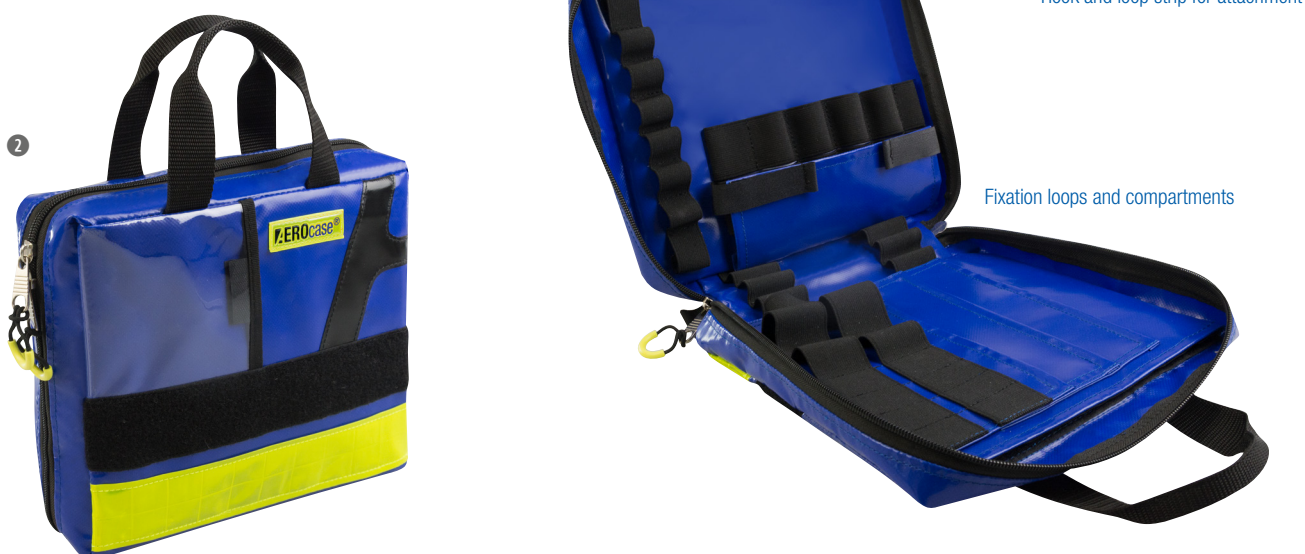


### Intubation Bag MCIL1

Discontinued item

Large spacious intubation bag made of durable AEROTex® - PLAN (Tarpaulin).

- Robust and easy to disinfect
- Many elastic fixation loops for attaching the accessories required for the intubation
- Compartments for storing endotracheal tubes and laryngeal masks
- Transparent window for parts list / labelling
- Hook and loop strip on the back for the optimal attachment in emergency cases
- Bidirectional zipper with zipper puller



Material	Colour	Size	Dimensions (W x H x D)	Weight	Volume	Item No.
AEROTex® - DURA (Nylon)	■ Ultramarine Blue (RAL 5002)	S	approx. 30 x 16 x 4 cm	approx. 0.24 kg	approx. 2 l	① HT01-MCIS1-B
AEROTex® - PLAN (Tarpaulin)	■ Ultramarine Blue (RAL 5002)	L	approx. 27 x 22 x 9.5 cm	approx. 0.50 kg	approx. 5 l	② HT03-MCIL1-B <span>Discontinued item</span>