

SAM[®] CHEST SEAL

OCCCLUSIVE DRESSING FOR OPEN CHEST WOUNDS



Patent Pending

SAM MEDICAL
PRODUCTS[®]

800.818 4726 | sammedical.com

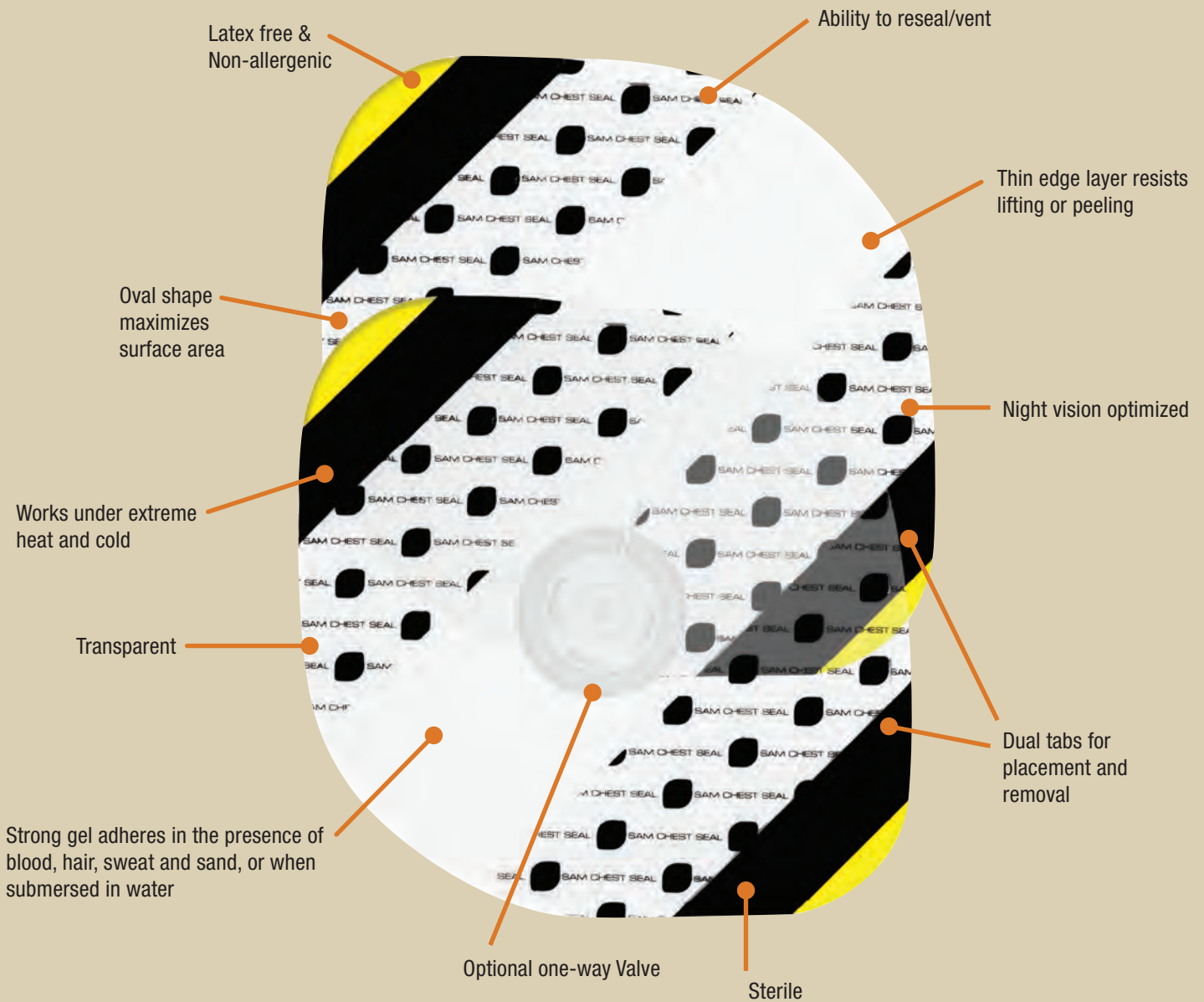


Made in USA

CE 0050

DESIGN

Meets CoTCCC Preferred Features for Chest Seals



FUNCTIONAL DESIGN

The SAM[®] Chest Seal is an occlusive dressing designed to treat open chest wounds, a life-threatening situation that could lead to tension pneumothorax. This is the second-leading cause of preventable death on the battlefield.

The SAM[®] Chest Seal answers the long-standing need for an adhesive strong enough to adhere to skin that is subject to sweat, blood, hair, sand, or water. The featured hydrogel adhesive also allows for the ability to reseal, making it ideal for venting. The SAM[®] Chest Seal addresses other military needs including a large coverage area, night vision optimization and the inclusion of a highly and rapidly absorbent 5" x 9" pad to help clean the wound.

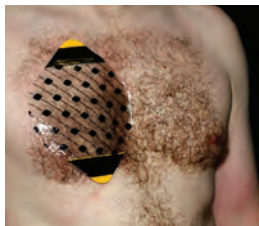
The SAM[®] Chest Seal is available with or without valve. The valved version features a one-way valve when its cap is removed. This provides for low-resistance flow of air out of the chest cavity while preventing ingress. The valve is also designed to prevent blockage internally. With the cap in place, the dressing is occlusive.

The vacuum-sealed pouch has tear notches at each side, but can also be peeled to provide the medic with a sterile field. For use in global combat zones, the SAM[®] Chest Seal is optimized for night vision. Both the packaging and chest seal can be seen under no light conditions with the use of a night vision device. The SAM Chest Seal is proudly made in the U.S.A.

UNIQUE FEATURES

STRONG ADHESION

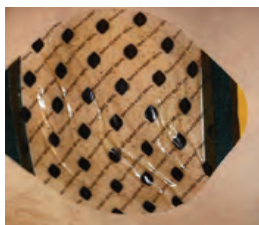
One of the many features that sets the SAM Chest Seal apart from the competition.



ADHESION TO BODY HAIR TEST
Superior adhesion to body with ample hair.



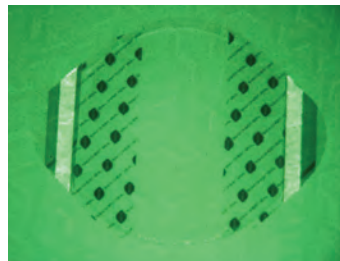
WATER SUBMERSION TEST
Image shows adhesive strength after 12 minutes of water submersion.



SAND ENVIRONMENT TEST
Image shows application with 2.9 grams of sand applied to dressing to simulate application in a desert environment.

NIGHT VISION OPTIMIZED

The SAM Chest Seal and packaging are optimized for night vision. The pouch, dressing backing, and tabs provide optimal contrast for visibility in normal light, low light, and night conditions (using a night vision device).



SAM Chest Seal under night vision

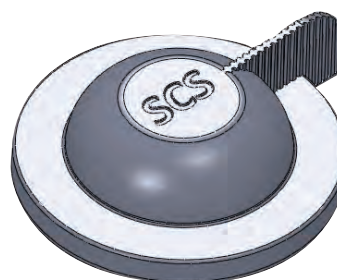


Packaging under night vision

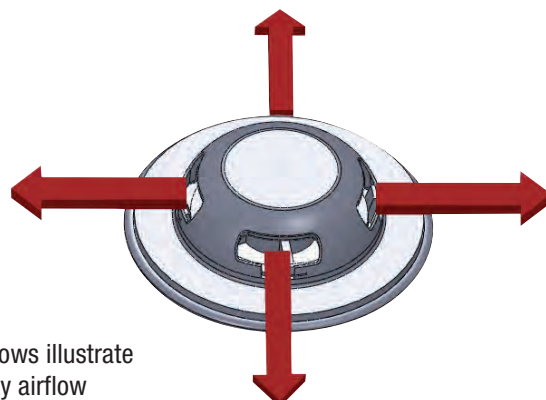
OPTIONAL ONE-WAY VALVE

The SAM Chest Seal has an optional one-way valve that allows airflow from the chest cavity while preventing ingress. Its patented design also reduces internal obstruction from blood clots or soft tissue. The valve is activated by removing the cap. Reattaching the cap will stop the one-way valve operation.

The domed shape of the valve was specially designed to prevent external obstruction of the air channels from items such as blankets, clothing, and body armor.



Dome shape helps prevent external obstruction



Red arrows illustrate one-way airflow

MEETS COTCCC PREFERRED FEATURES FOR CHEST SEALS

- FDA 510(k) Cleared
- Device adheres despite the presence of blood, sweat, hair and sand
- Meets Military Standard 810G
- Easily applied in battlefield situations
- Tabs facilitate removal of adhesive [dressing]
- Large oval shape
- Sterile
- Creates an occlusive seal
- Ventable by lifting a flap on the seal; reseals after venting
- Puncture-resistant packaging; lightweight and rugged
- Integrity and function maintained when stored or carried in folded configuration

PREMIUM PACKAGING

NON-VALVE

5" x 9" PAD

Highly absorbent pad for cleaning wound area; pad absorbs 151.7 mL of fluid in five seconds

TEAR AND PEEL POUCH

Rugged foil pouch can be peeled to provide a sterile field.

VACUUM PACKED
For reduced mass



NIGHT VISION OPTIMIZED
Dressing and packaging designed for use in all light conditions

VALVE

5" x 9" PAD

Highly absorbent pad for cleaning wound area; pad absorbs 151.7 mL of fluid in five seconds

TEAR AND PEEL POUCH

Rugged foil pouch can be peeled to provide a sterile field.

VACUUM PACKED
For reduced mass



NIGHT VISION OPTIMIZED
Dressing and packaging designed for use in all light conditions

TECHNICAL DATA

Non-Valve

- Two chest seals per pouch: 9.2" x 7.6"
- One 5" x 9" pad per pouch
- Total area of chest seals: 85 sq. inches
- Total area of sterile packaging available after peeling pouch open: 126 sq. inches

Valve

- One chest seal per pouch: 9.2" x 7.6"
- One 5" x 9" pad per pouch
- Total area of chest seal: 42.5 sq. inches
- Total area of sterile packaging available after peeling pouch open: 126 sq. inches

Part No.	Description	NSN No.
CS62010	Valve: 9.2" x 7.6" one per pack	6510-01-606-7097
CS62011	Non-Valve: 9.2" x 7.6" two per pack	6510-01-621-1129

All chest seals are transparent and come with a large sterile pad

ABOUT SAM MEDICAL PRODUCTS

SAM Medical Products® is committed to bringing innovative solutions to market that meet the challenging needs of emergency medicine, the military, law enforcement, and hospitals around the world. Our SAM® Splint is the gold standard in flexible splinting products, and we take pride in creating quality products that raise the bar. Our product lines focus primarily on fracture management and wound care, and include the SAM® Splint, SAM® Pelvic Sling II, SAM® Junctional Tourniquet, SAM® Soft Shell Splint, Blist-O-Bar®, BursaMed®, and the SAM® Chest Seal. Headquartered in Wilsonville, OR, our products are distributed globally in over 60 countries.

Find out more at www.sammedical.com.



sammedical.com | customerservice@sammedical.com | 800.818.4726
P.O. Box 3270 Tualatin, OR 97062 | 503.639.5474 | Fax 503.639.5425